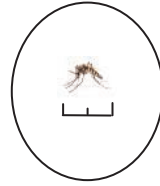


ALL ABOUT *Aedes*

- ◆ *Aedes* mosquitoes are an invasive species that have made their way into many counties in California.
- ◆ *Aedes aegypti* and *Aedes albopictus* are urban mosquitoes that feed primarily on humans.
- ◆ They are aggressive day-biters found both indoors and outdoors.
- ◆ They especially like to feed on ankles, wrists, and elbows.
- ◆ Both species lay eggs in small sources of water, as small as a bottle cap.
- ◆ Eggs can survive on the surfaces of containers for a long time. They hatch when the container fills with water.

WHY IS THIS IMPORTANT?

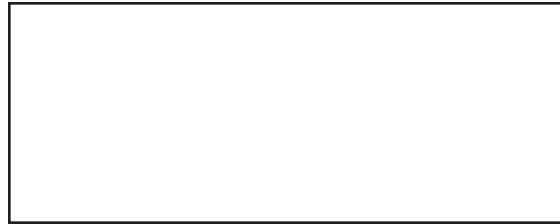
- ◆ *Aedes aegypti* and *Aedes albopictus* are a major annoyance and a public health threat.
- ◆ These mosquitoes can spread diseases including Zika, dengue, and chikungunya.



1/8-1/4 inch

Actual size of mosquito

Contact your local vector control agency if you detect unusual numbers of mosquitoes or you are being bitten during the day.



California Department of Public Health
Infectious Diseases Branch
Vector-Borne Disease Section
(916) 552-9730
www.cdph.ca.gov
September 2016

INVASIVE MOSQUITOES



Aedes aegypti



Aedes albopictus

PREVENT

Eliminate breeding sites

- ◆ Every week, dump and scrub containers that hold standing water
- ◆ Keep rain gutters free of debris
- ◆ Keep decorative fountains operational or drain the water
- ◆ Change water in animal watering dishes often
- ◆ Make sure yard drain pipes are not clogged and collecting water

PROTECT

- ◆ **Cover up:** Wear long sleeves and pants when outdoors
- ◆ **Screens:** Make sure doors and windows have screens that fit tightly and do not have holes
- ◆ **Use insect repellent:** Apply repellent with active ingredients DEET, picaridin, IR3535 or oil of lemon eucalyptus to exposed skin and/or clothing (as directed on the product label)



ELIMINATE MOSQUITO BREEDING SITES AROUND YOUR HOME!

- ◆ Discarded cans/bottles
- ◆ Garden tools
- ◆ Tree holes
- ◆ Flower pots
- ◆ Old tires
- ◆ Toys
- ◆ Buckets
- ◆ Rain drums/barrels
- ◆ Pet dishes

Anything that holds water!

